

Honeywell
THE POWER OF CONNECTED

Security



VIDEO SURVEILLANCE GUIDE 2019-1
SOLUTIONS FOR ENTERPRISE



VIDEO SURVEILLANCE SYSTEMS

The reliability, integrity and dependability of our video systems ensure that you can meet all of your existing and future security challenges with complete confidence. Our solutions range from IP and analogue cameras and digital and network video recorders, through to intelligent video analytics and sophisticated video management systems.

CONTENTS

Video Management System MAXPRO® VMS	4-5
Network Video Recorders (NVRs) MAXPRO® NVR and MAXPRO Viewer	6-7
IP Cameras: equiP® Series	8
• IR Mini-Domes & Pancake camera	9
• Rugged IR Mini-Domes	10
• IR Rugged Bullet Cameras	11
• Box Cameras	12
• Fisheye IR Cameras	13
• Multi-Imager Cameras	14
• Hazardous environments cameras	15
• PTZ Cameras	16
equiP PTZ Cameras	17-18
• HDZ IP IR PTZ Cameras	
• HDZ IP PTZ Cameras	
equiP/ HDZ Cameras Mounts	20-21
Learn more about:	22-25
• Video Analytics definition and equiP Cameras compatibility	
• GDPR	
• Cybersecurity	










**Download our free
"Cameras & NVRs" App
All our video products
on your device...**

or visit:
<http://www.security.honeywell.com/me>

PROTECTION AND PEACE OF MIND FROM HONEYWELL

There's a Honeywell Security system for every lifestyle, budget and need, and it does more than keep you and your employees safe and secure. With our extensive technology portfolio, experienced team and trusted brand, we are recognised as the "partner of choice" within the security industry. Here are a few reasons why:

• Truly Global Footprint

Honeywell Security operate directly in 100+ cities worldwide providing local support to our customers. Our products are globally available through a network of trained and certified system integrators, installers and distributors. Through a highly selective process, we choose only the most qualified security partners to join our elite program. We are also able to support customers internationally with our Global Customer Accounts program.

• Product Quality

At a product level, Honeywell's CCTV range was specifically developed to meet the stringent needs of the global CCTV market and be fully compliant with all local regulatory requirements in the markets our products are sold in, eg. CE, UL etc...

• Integrated Solutions

Honeywell is leading the connected building systems globally to bring together all its products into a connected platform. This enables significant efficiencies for end users and system operators by helping to reduce the total cost of ownership across multiple electronic low voltage systems.

• Scalable Systems – A Solution for Every Need

Honeywell offers connected solutions for all situations starting with standalone systems for small and medium businesses all the way up to large multi-site critical infrastructure projects. Whether you are a small business or the largest commercial enterprise, Honeywell has the right security solution for you.

• Long Term Presence

Honeywell Security is one of the largest suppliers of electronic security products in the world and is backed by the corporate resources of the global Honeywell business. We are proud of our ability to support our loyal customer installation base. Our size and resources mean that you can be confident that Honeywell will still be around for many decades to come.

• New Product Development

Our products are continuously updated to ensure we stay abreast of changing market requirements whilst maintaining excellent durability and reliability. You can therefore be confident that if you use our products, they will have a long and effective working life.

• Single Source Of Supply

Honeywell is one of the largest and oldest companies globally not only for Video Surveillance systems but also offering a complete portfolio of low voltage systems such as Intrusion systems, Access control, Fire, Public Address/Voice Alarm, Building Management systems and others to create a truly Connected Building for end users. This allows end users to buy all their systems from a single vendor for added convenience and reliability for end-to-end support.

• Cyber Security

At Honeywell, we take the cyber security very seriously and ensure all new products and existing products are continually maintained to ensure the highest levels of cyber security to protect our customers from any known vulnerabilities.

• Code of conduct

Honeywell is committed to observing the highest levels of ethics in all our business transactions.

MAXPRO® VMS

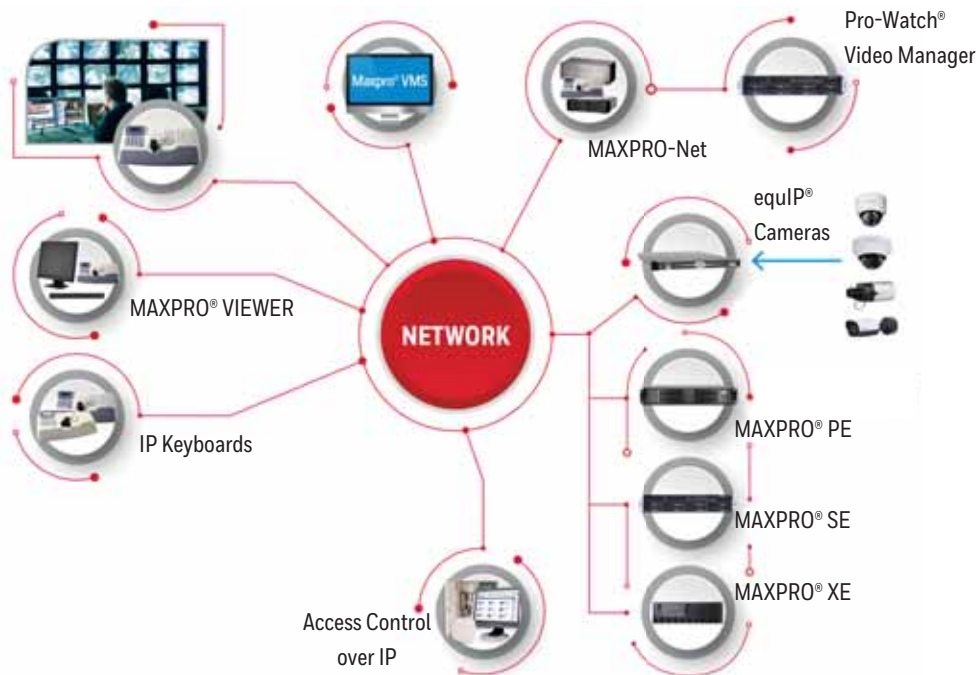
Video Management System

MAXPRO® VMS controls multiple sources of video subsystems to enhance the user's video surveillance experience with maximum efficiency and minimum effort.

Using an open architecture and IP-based systems, MAXPRO VMS leverages an existing video infrastructure to collect, manage and present video in a clear and concise manner.



MAXPRO® VMS System Diagram



MAXPRO VMS – Single Command and Control Interface

Integrated Video and Security Management System MAXPRO VMS and Pro-Watch®

The integration of MAXPRO VMS and Pro-Watch affords superior access control with alarm monitoring and video capabilities.



Next Generation Vision MAXPRO VIEW Client Software

MAXPRO VIEW is the feature-rich next generation viewer that works with MAXPRO VMS to help operators intuitively perform video operations, thereby increasing personal productivity and responsiveness.



World Class, Scalable NVR

MAXPRO VMS is scalable for the future as the needs of your customers grow. Enterprise NVR technology is used in some of the world's largest digital video surveillance systems.



IP Network Solutions

For a total video management experience, Honeywell's MAXPRO VMS and IP-ready products such as PTZs, Mini-Domes and box cameras integrate with third party DVRs and NVRs – facilitating the migration to IP.



Unified Command & Control UltraKey IP Controllers

MAXPRO VMS gives users a unified end-to-end solution to interface devices ranging from NVRs and DVRs to PTZ controllers, matrix switchers and joystick controllers.



Smarter Video, Smarter Decisions with Active Alert® Video Analytics

MAXPRO VMS offers the option of adding our intelligent video analytics suite, Active Alert. The analytics engine uses advanced search tools for manned and unmanned video surveillance systems that removes the strain of surveillance and the burden of data overload from operators.



MAXPRO® NVR

Network Video Recorders

From entry to enterprise, Honeywell's family of network-based boxed NVRs include a Professional Edition (PE), Standard Edition (SE) and Xpress Edition (XE). To simplify installation, the solutions come with pre-installed software and camera licences for quick set-up and system scalability. As a system grows, multiple NVR units can be combined into a full MAXPRO VMS system to support the deployment of a large-scale system



MAXPRO® NVRs

Open and easy to integrate

- Integrates with all Honeywell IP cameras and HVE Encoders
- H.265 compression
- Support for ONVIF Profile S, G & Q, PSIA
- Compatible with ESI Video Alarm receiver

Easy to Install and Use

- Pre-installed with all software and pre-licensed for up to 128 Channels (except SW)
- Easy 3-Click wizard for a quick installation
- Learn one, know all – common feature rich user experience across MAXPRO NVR family and MAXPRO VMS / Viewer and "MAXPRO NVR" mobile App

Scalable Integrated Security Solution

- Multiple MAXPRO NVRs deployed for system expansion using a distributed architecture and integrated with the MAXPRO Viewer multi-site software or MAXPRO VMS enterprise video management system
- Integrates with Honeywell WIN-PAK and Pro-Watch Access Control Systems

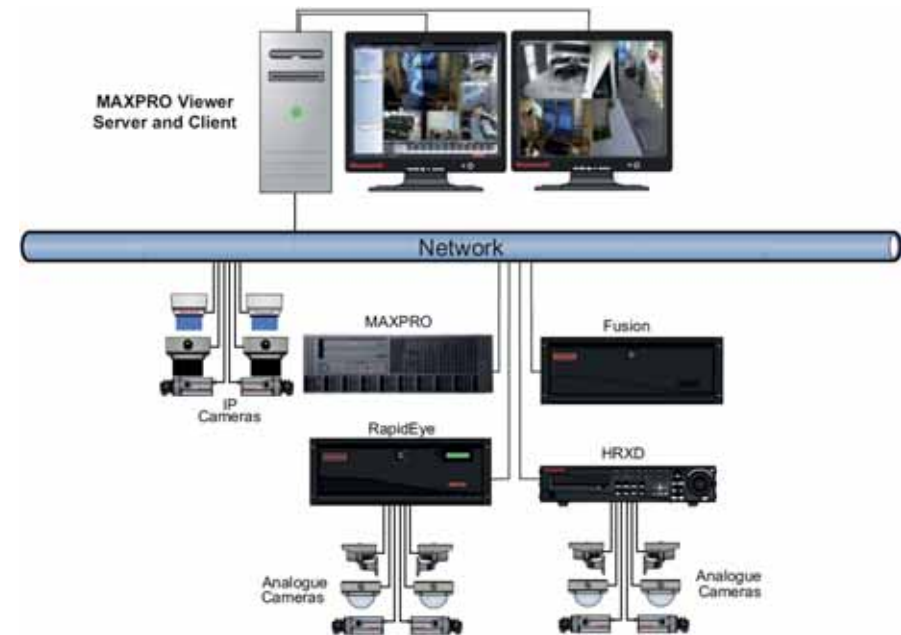
Flexible NVR Hardware

- Provides the processor and storage enclosure in one chassis, resulting in both space and cost savings
- Rack mountable with up to 12 removable drives

VERSION	DESCRIPTION	IP CHANNELS (STREAMS)	COMPRESSION	STORAGE	PERFORM	POWER SUPPLY
MAXPRO NVR PE (Rev C)	32/48/64/128-Channel Enterprise NVR	Up to 128 IP Channels (64 Streams)	MJPEG, MPEG-4, H.265 H.264	Up to 144TB RAID5/6	Up to 3840 fps @ 1080p (4 Mbps bitrate)	2x750W (Redond.)
MAXPRO NVR SE	16/32/64-Channel NVR	Up to 64 IP Channels (64 Streams)		Up to 48TB	Up to 1280 fps @ 1080p (4 Mbps bitrate)	1 x 400W
MAXPRO NVR XE	8/16-Channel Entry Level NVR	Up to 16 IP Channels (64 Streams)		Up to 12TB	Up to 480 fps @ 1080p (4 Mbps bitrate) HD	1 x 300W
MAXPRO NVR SOFTWARE ONLY	Network Video Recording Solution	Up to 128 IP Channels (64 Streams)		N/A	Up to 3840 fps @ 1080p (4 Mbps bitrate)*	N/A

MAXPRO® VIEWER

MAXPRO Viewer is a software application that allows multi-site viewing of Honeywell recorders including MAXPRO® NVRs and previous products that could already be in place. These recorders may be grouped into sites and viewed simultaneously through salvos and on multiple monitors. This creates a single command point where video and events can be viewed from a single user interface through the range of Honeywell recorders.



equiP® IP Cameras

Offering unlimited possibilities for every installation, Honeywell's equiP cameras provide outstanding image clarity and definition at minimal bandwidth, enabling better and faster decision making for more effective safeguarding of people and property.

Now with intelligent video analytics at the edge on equiP models and the open Video Analytic Framework, Honeywell can deliver improved situational awareness and allow you to customize your solution utilizing additional integrations.



equiP Cameras

We're Focused on the Latest Technologies

Designed with open IP standards, including ONVIF Profile S, G and Q, our equiP network cameras offer superb picture quality and seamless integration to our portfolio of MAXPRO NVRs as well as other manufacturers' network devices to ensure full interoperability.

All cameras in the range support powering over PoE. This allows for faster installation time, remote power management for supply, monitoring, and cost saving verses running individual power to each camera. This provides both energy efficient solutions and infrastructure for centralised uninterruptible power backup for critical operations.



equiP Cameras

IR Indoor Dome IP Cameras

The H3 equiP dome cameras are perfect for indoor installations that require excellent picture quality at minimal bandwidth while offering maximum installation flexibility with three mounting options. Boasting a sleek modern design and offering two different lens options, the cameras are suited for a wide range of applications.



	H3W2GR2	H3W2GR1	H3W2GR1V	H3W4GR1	H3W4GR1V	H2W2GR1
Resolution	2MP			4MP		2MP
Sensor	1/2.7"		1/2.8"	1/3"		1/2.8"
Best Compression	H.264		H.265+	H.264	H.265+	H.265+
Lens (MFZ)	7~22mm	2.7~12mm	2.7~13.5mm	2.7~12mm	2.7~13.5mm	2.8mm
Angle of View (Horiz)	41°- 18°	99°- 34°	110°-32°	99°-34°	110°-30°	110°
Minimum Aperture	F1.4		F1.6	F1.4	F1.6	F2.0
Minimum Illumination	0.01 lux		0.001 lux	0.01 lux		0.001 lux
Smart IR LEDs range	20m					15m
True WDR	120dB		120dB (?)	120dB	120dB (?)	120dB (?)
Power Input	12VDC / 24VAC / PoE					12VDC / PoE
Consumption (Max)	9W		11W	9W	10.5W	4.4W
Auxillary Power Supply Output	-		12VDC / 2W	-	12VDC / 2W	-
PoE	PoE (Class 0)					PoE (Class 0)
Long distance PoE	100m		300m (?)	100m	300m (?)	100m
Temperature	-30°C +50°C		-30°C +60°C	-30°C +50°C	-30°C +60°C	-30°C +60°C
Video Analytics	See analytics compatibility table					See table
Onvif Profiles	S, G		S, G, Q	S, G	S, G, Q	S, G, Q
Audio	Built-in microphone					Built-in micro
Environmental	N/A					IP67/IK10
In-Ceiling bracket supplied						N/A
Other			UL CAP		UL CAP	UL CAP

(?) With Smart Scene Adaptive Technology, (?): 300m support using 3X POE switch

Micro-dome IP Cameras

With Low light, WDR and audio detection capabilities, this camera is the ideal solution for elevator surveillance. It can reduce people waiting time with faster response in case of incident and allows people identification to anticipate potential risks.



equiP Cameras

IR Rugged Dome IPCameras

The H4 equiP rugged dome cameras are perfect for outdoor installations that require excellent picture quality at minimal bandwidth while offering maximum protection against dust, dirt, and water. Boasting a sleek modern design and offering up to 4K high definition images, the cameras are suited for a wide range of applications.



	H4L2GR1	H4L2GR1V	H4W2GR1	H4W2GR1V	H4W2GR2	H4W4GR1	H4W4GR1V	H4L6GR2	H4D8GR1
Resolution	2MP				4MP		6MP	12MP	
Sensor	1/2.8"		1/2.7"	1/2.8"	1/2.7"	1/3"		1/1.8"	1/1.7"
Best Compression	H.264	H.265+	H.264	H.265+	H.264		H.265+	H.265	
Lens (MFZ)	2.7~12mm		2.7~13.5mm		7~22mm	2.7~12mm	2.7~13.5mm	4.1~16.4mm	2.7~12mm
Angle of View (Horiz)	102°- 35°	102°- 35°	99°-34°	110°- 32°	44° - 16°	99°-34°	110°-30°	86° - 35°	86°- 35°
Minimum Aperture	F1.4	F1.6	F1.4	F1.6	F1.4		F1.6	F1.53	F1.53
Minimum Illumination	0.005 lux	0.001 lux	0.01 lux	0.001 lux	0.01 lux		0.004 lux	0.02 lux	
Smart IR LEDs range	50m								45m
True WDR	140dB	140dB (?)	120dB	120dB (?)	120dB	120dB (?)	Digital WDR		
Power Input	12VDC / 24VAC / PoE								
Consumption (Max)	12W	20.5W	12W	22W	12W	15W	18W		
Auxillary Power Output	-	12VDC-2W	-	12VDC-2W	-	12VDC-2W	-		
PoE	Class 0	Class 4	Class 0	Class 4	Class 0		Class 4		
Long distance PoE	100m	300m (?)	100m	300m (?)	100m	300m (?)	100m		
Temperature	-40°C +60°C								
Video Analytics	See analytics compatibility table								
Onvif Profiles	S, G	S, G, Q	S, G	S, G, Q	S, G	S, G, Q		S, G	
Other	UL CAP		UL CAP				UL CAP		UL CAP

(?) With Smart Scene Adaptive Technology, (?): 300m support using 3X POE switch



equiP Cameras

Box IP Cameras

These box cameras are perfect for installations that require excellent picture quality at minimal bandwidth, with a flexible design that mounts easily to a wall or ceiling. Boasting a sleek modern design and offering up to 4K high definition images, these cameras are suited for a wide range of applications.



Lens sold separately



	HCL2G	HCL2GV	HCW2G	HCW2GV	HCW4G	HCD8G
Resolution	2MP				4MP	12MP
Sensor	1/2.8"		1/2.7"	1/2.8"	1/3"	1/1.7"
Best Compression	H.264	H.265+	H.264	H.265+	H.264	H.265
Lens	To be ordered separately - support DC-Iris					
Focus	Auto Back Focus					
Minimum Illumination	0.002 lux	0.001 lux	0.01 lux	0.001 lux	0.01 lux	0.02 lux
True WDR	140dB	140dB (?)	120dB	120dB (?)	120dB	Digital WDR
Power Input	12VDC / 24VAC / PoE					
Consumption (Max)	6.5W	9.5W	6.5W	10W	6.5W	8W
PoE	PoE (Class 0)					
Long distance PoE	100m	300m (?)	100m	300m (?)	100m	
Temperature	-30°C +60°C					
Video Analytics	See analytics compatibility table					
Onvif Profiles	S, G	S, G, Q	S, G	S, G, Q	S, G	
Audio	Built-in microphone					
Other	UL CAP Certified		UL CAP Certified		UL CAP Certified	

(?) With Smart Scene Adaptive Technology, (?): 300m support using 3X POE switch

Box Camera Lenses

	PART NUMBER	DESCRIPTION
	HLM27V12MPD (**)	4 MP, 1/2.7", F1.6, 2.7 - 12 mm CS Lens
	HLM37V16MPD	12 MP, 1/1.7", F1.5, 3.7 - 16 mm CS Lens

(**) Not compatible with HCD8G

	PART NUMBER	DESCRIPTION
	HLM5V50MPDE (**)	6 MP, 1/2.7", F1.6, 5 - 50 mm CS Lens
	HLM105V42MPD	12 MP, 1/1.7", F1.5, 10.5 - 42 mm CS Lens
	HLM30V120MPD	12 MP, 1/1.7", F2.2-2.47, 30-120 mm C Lens

equiP Cameras

IR Rugged Bullet IP Cameras

The HB equiP serie of IP bullet cameras are perfect for outdoor installations that require excellent picture quality at minimal bandwidth while offering maximum protection against dust, dirt, and water. Boasting a sleek modern design and offering up to 4K high definition images, the cameras are suited for a wide range of applications.




	HBL2GR1	HBL2GR1V	HBW2GR1	HBW2GR1V	HBW2GR3	HBW2GR3V	HBW4GR1	HBW4GR1V	HBL6GR2	HBD8GR1
Resolution	2MP				4MP				6MP	12MP
Sensor	1/2.8"		1/2.7"	1/2.8"	1/2.7"	1/2.8"	1/3"		1/1.8"	1/1.7"
Compression	H.264	H.265+	H.264	H.265+	H.264	H.265+	H.264	H.265+	H.265	
Lens (MFZ)	2.7-12mm		2.7-13.5mm		5-50mm	5-60mm	2.7-13.5mm		4.1-16.4mm	5.1-12.8mm
Angle of View	97°-34°	102°-35°	99°-34°	110°-32°	66°-6.2°	62°-6°	99°-34°	110°-30°	86°-35°	86°-35°
Min. Aperture	F1.4	F1.6	F1.4	F1.6	F1.4	F1.6	F1.4	F1.6	F1.53	F1.7
Min. Illumin.	0.005lux	0.001lux	0.01 lux	0.001 lux	0.01 lux				0.004lux	0.02 lux
IR LEDs range	60m									65m
True WDR	140dB	140dB (?)	120dB	120dB (?)	120dB	120dB (?)	120dB		Digital WDR	
Power Input	12VDC / 24VAC / PoE									
Consump. (Max)	14.5W	17W	12W	20.5W	12W	17.3W	12W	17.6W	18W	
Power Output	-	12VDC-2W	-	12VDC-2W	-	12VDC-2W	-	12VDC-2W		
PoE	Class 4		Class 0	Class 4	Class 0	Class 4				
Long dist. PoE	100m	300m (?)	100m	300m (?)	100m	300m (?)	100m	300m (?)	100m	
Temperature	-40°C +60°C									
Video Analytics	See analytics compatibility table									
Onvif Profiles	S, G	S, G, Q	S, G	S, G, Q	S, G	S, G, Q	S, G	S, G, Q	S, G, Q	S, G
Other	UL CAP		UL CAP		UL CAP					UL CAP


(?) With Smart Scene Adaptive Technology, (?): 300m support using 3X POE switch

Accessories

Long distance PoE switch

PART NUMBER	DESCRIPTION	POWER	COMPATIBILITY	DISTANCE
 HPOE3X+	3X PoE switch, 1x100/1000 Base-X, SFP fiber port, 1x10/100/1000 Base-T, 4x10/100 Base-T (PoE power supply)	230V VAC / 48-57 V DC power adapter, consumption <4.8W	HBW2GR1V, HBW2GR3V, HBL2GR1V, HBW4GR1V, H4W2GR1V, H4W4GR1V, H3W2GR1V, H3W4GR1V, HCW2GV	up to 300m

IP/Coax converter

PART NUMBER	DESCRIPTION	POWER	DISTANCE
 HLR1001+	IP to Coax to IP Transmitter and receiver 1x10/100 Mbps Base-TX or RX, 1xBNC	PoE (<2W)	With RG59 coaxial cable: 400m/100Mbps, 1000m/10Mbps

*: Not available in the US

equiP Cameras

IR Fisheye IP Cameras

These fully featured attractive fisheye cameras are perfect for outdoor installations that require excellent picture quality at minimal bandwidth while offering maximum protection against dust, dirt, and water. Boasting a sleek modern design and offering the widest angle of view possible, the cameras are suited for a wide range of applications.



	HFD6GR1	HFD8GR1
Resolution	6MP	12MP
Sensor	1/1.8"	1/1.7"
Best Compression	H.265	
Lens	1.7mm	1.98mm
Angle of View (Horiz)	185°	
Minimum Aperture	F2.0	F2.8
Minimum Illumination	0.01 lux	
Smart IR LEDs range	8m	
WDR	Digital WDR	
Power Input	12VDC / PoE	
Consumption (Max)	10W	
PoE	PoE (Class 0)	
Temperature	-30°C +60°C	
Video Analytics	See analytics compatibility table	
Onvif Profiles	S, G	
Audio	Built-in microphone	
Other	RJ45 Gigabit, UL CAP Certified	



equip Cameras

IR Multi-imager IP Cameras

Ideal for mission critical verticals introducing nuclear and non-nuclear power stations, utility plants and petrochemical complexes, these highly durable cameras are also ideal for high risk business environments such as banking, higher education and commercial offices.



	HM4L8GR1	HMBL8GR1
Resolution	8MP	
Sensors	1/1.9" (x 4)	1/1.7" x 4
Best Compression	H.265	
Lenses	5.0mm (x 4)	1.98mm
Angle of View (Horiz)	180°	
Minimum Aperture	F2.2	F2.8
Minimum Illumination	0.002 lux	
Smart IR LEDs range	30m	
WDR	Digital WDR	
Power Input	24VAC / PoE+	
Consumption (Max)	25W	
Auxillary Power Supply Output	N/A	
PoE	PoE+ (Class 4)	
Long distance PoE support (300m)	N/A	
Temperature	-40°C +60°C	
Video Analytics	See analytics compatibility table	
Onvif Profiles	S, G, Q	
Other	RJ45 Gigabit	



equip Cameras

Hazardous and challenging environments cameras

Designed for use in hazardous and challenging environments, Honeywell's explosion-proof and corrosive-proof network cameras features an AISI 316L stainless steel housing to provide maximum protection against deterioration.



HCPB302 *

*: Not available in the US



	HEPB302W01A04 *	HEPB302W01A10 *	HCPB302 *
Resolution	2MP		2MP
Sensor	1/2.8"		1/2.8"
Best Compression	H.265		H.265
Lens	4.5-135mm MFZ		4.5-135mm MFZ
Angle of View (Horiz)	62.35°-2.53°		62.35°-2.53°
Minimum Aperture	F1.6-F4.4		F1.6-F4.4
Minimum Illumination	0.005 lux in colour, 0.0005 lux in B&W		0.005 lux in colour, 0.0005 lux in B&W
WDR	True WDR 120dB		True WDR 120dB
Power Input	12VDC / 24VDC / 24VAC		24 VAC
Consumption (Max)	42W		42W
Armoured Cable	4m	10m	N/A
ATEX-certified	EN 60079-0; EN 60079-1; EN 60079-31		N/A
IECEX-certified	IEC 60079-0; IEC 60079-1; IEC 60079-31		N/A
Temperature	-60°C +65°C		-40°C + 60°C
Video Analytics	See analytics compatibility table		See analytics table
Onvif Profiles	S		S
Housing	AISI 316L stainless steel		AISI 316L stainless steel
Other	Wiper, Electronic Image stabilization (EIS)		EIS

HEPB302W01Axx



Not available in the US, available in Canada

MODEL	ACCESSORIES		
HEPWS	Washer system kit, 10 L	•	
HCPWM	AISI 316L stainless steel wall mount bracket	•	•
HCPPMA	AISI 316L stainless steel pole mount adapter	•	•
HCPDMA	AISI 316L stainless steel corner mount adapter	•	•
HCPPRM	AISI 316L stainless steel parapet mount bracket	•	
HCPPRMJ	AISI 316L stainless steel parapet mount joint	•	
HCPWK	AISI 316L Stainless Steel Wiper Kit, 24 VAC		•
HCPWSK	Washer System Kit, 24 VAC		•

equip Cameras

Explosion-proof PTZ cameras

Honeywell's latest explosion-protected PTZ network camera is a good fit for onshore, offshore, marine, and heavy industrial installations in hazardous and challenging environments. The camera features a 316L stainless steel housing certified for hazardous areas according to ATEX, IECEx, and UL. The housing prevents any interior sparks or explosions from escaping and igniting the gases or dust in the surrounding air. The HEPZ cameras provide extremely crisp video with up to 2 million effective pixels, 30x optical zoom, and True Day/Night WDR for continuous surveillance in both hazardous and safe area applications.



	HEPZ302W0
Resolution	2MP
Sensor	1/2.8"
Best Compression	H.265
Lens	4.5-135mm MFZ
Angle of View (Horiz)	62.35°-2.53°
Minimum Aperture	F1.6-F4.4
Minimum Illumination	0.005 lux in colour, 0.0005 lux in B&W
PAN/TILT	PAN 360° endless, TILT -90° to 90°
WDR	True WDR 120dB
Power Input	24VAC
Consumption (Max)	120W
ATEX-certified	EN60079-0; EN60079-1; EN60079-31
IECEx-certified	IEC 60079-0; IEC 60079-1; IEC 60079-31
Temperature	-40°C +60°C
Video Analytics	See analytics compatibility table
Onvif Profiles	S, Q
Housing	AISI 316L stainless steel
Other	Wiper



MODEL	ACCESSORIES
HEPZWM	Wall Mount Bracket, AISI 316L stainless steel
HEPZPMA	Pole Mount Adapter, AISI 316L stainless steel
HEPZCMA	Corner Mount Adapter, AISI 316L stainless steel
HEPZPRM	Parapet/Ceiling Mount Adapter, AISI 316L stainless steel
HEPWS	Washer System Kit, with ATEX-certified solenoid valve, 24 VAC/VDC
HEPZA04	4 m Armored Cable with Barrier Cable Gland, ATEX/IECEx
HEPZA10	10 m Armored Cable with Barrier Cable Gland, ATEX/IECEx
HEPZT04	4 m Cable Tail with Conduit Cable Gland 3/4", UL
HEPZT10	10 m Cable Tail with Conduit Cable Gland 3/4", UL

equip PTZ Cameras

HDZ IP IR PTZ Cameras

Honeywell's HDZ series of Network PTZ True Day/Night cameras provides extremely crisp video with up to 2 million effective pixels. The series uses the latest digital technology and advanced video processing and includes a wide range of models to meet the diverse needs of large scale surveillance applications. Extremely crisp video with model options that include high definition 30x optical zoom

- With continuous video footage via the cameras' onboard SD card storage option, end users can have total confidence even in the unlikely event of a network crash
- Installation time and costs are reduced by eliminating the need for electrician intervention using high power POE++ on outdoor models
- Outdoor models include vandal proof IK10, ensuring continuous monitoring of areas vulnerable to attack and vandalism
- ONVIF compatibility allows "off the shelf" integration to support wider integration to existing or third party systems
- For areas where vibration and adverse weather could interfere with surveillance operations, built-in Electronic Image Stabilizer (EIS) provides an extremely stable platform



HDZ302LIK



	HDZ302LIW	HDZ302LIK
Resolution		2MP
Sensor		1/1.9"
Best Compression		H.264
Lens		6.0-180mm
Angle of View (Horiz)		61.2° - 2.32°
Minimum Aperture		F1.6-F4.8
PAN Travel		360° endless
TILT Travel		-10° to 90°, auto flip 180°
PRESETS		250
PRESET Speed		Pan: Up to 200°/s; Tilt: Up to 200°/s
Minimum Illumination		0.005 lux
Smart IR LEDs range	150m	200m
WDR		True WDR 120dB
Power Input		24 VAC / PoE++
Consumption : Min (Max)	24W (32W)	24W (38W)
PoE		PoE++ (Class 5)
Temperature		-40°C +70°C
Video Analytics		See analytics compatibility table
Onvif Profiles		S
Environmental	IP67	IP67 / IK10
Other	Wiper	



HDZ302LIW

equiP PTZ Cameras

HDZ IP PTZ Cameras



HDZ302IN-S1 / HDZ302IN-C1



HDZ302D



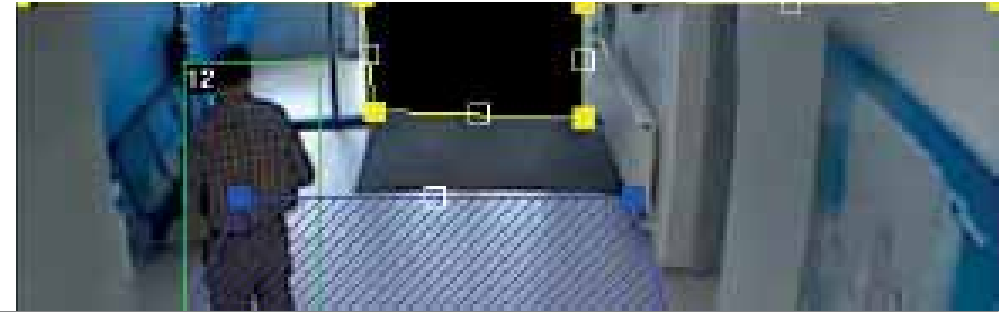
HDZ302DE



	HDZ302IN-S1	HDZ302IN-C1	HDZ302D	HDZ302DE
Resolution	2MP			
Sensor	1/2.8"			
Best Compression	H.265			
Lens	4.5mm - 135mm			
Angle of View (Horiz)	62.35° - 2.53°			
Minimum Aperture	F1.6-F4.4			
PAN Travel	360° endless			
TILT Travel	-20° to 90°, auto flip 180°		0° to 90°, auto flip 180°	
PRESETS	250			
PRESET Speed (PAN/TILT)	Up to 400%/s; / Up to 200%/s		Up to 500%/s; / Up to 400%/s	
Minimum Illumination	0.005 lux (colour)/0.0005 lux (B/W) @ F1.6			
WDR	True WDR 120dB			
Power Input	24 VAC / PoE+			
Consumption : Min (Max)	13W (13W)		13W (23W)	13W (31W)
PoE	PoE+ (Class 4)			
Temperature	-10°C +70°C		-40°C +60°C	-40°C +70°C
Video Analytics	See analytics compatibility table			
Onvif Profiles	S, G			
Environmental	IK10 (dome only)		IP66 / IK10	
Bubble type	Smoked		Clear	
Other	UL CAP Certified			

Video Analytics

Today's security market demands highly sophisticated technologies, and Honeywell's innovative analytics solutions deliver the required functionality to solve customer problems. Honeywell's analytic capabilities increase security, reduce shrinkage, enhance customer service and increase operational efficiencies. Honeywell Video Analytics automatically detects, analyses, tracks and classifies the behaviours of people and vehicles as they move through a scene.



Video Analytics equip Cameras compatibility

	H2W2GR1	H3WXGRx	H3WXGR1V	H4D8GR1_HBD8GR1_HCD8G	H4L6GR2	H4L2GR1V	H4WXGRx / H4L2GR1	H4WXGR1V	HBL6GR2	HBL2GR1V	HBWXGRx	HBWXGRV	HCL2G / HCWXG	HCL2GV	HCW2GV	HCPB302_HEPB302W01Ax4	HDZ302Dxx	HDZ302Llx	HEPZ302W0	HFDxGR1	HM4L8GR1_HMBL8GR1	CATEGORY	
Audio detection	✓	✓	✓	✓	✓	✓	✓	✓	✓	✓	✓	✓	✓	✓	✓		✓	✓		✓	✓	Green	Cameras can be configured to detect sounds that are above a selected threshold ⁽⁴⁾ .
Auto-tracking																	✓	✓	✓			Green	PTZ cameras can be configured to detect people or vehicles in the image and can follow the movement of the detected object automatically.
Face detection	✓	✓	✓	✓	✓	✓	✓	✓	✓	✓	✓	✓	✓	✓	✓		✓	✓	✓		✓	Green	Detects a human face moving towards it, triggering a response. The camera can only detect a face looking directly into the camera, not side views.
Heat Map						✓				✓			✓									Green	It represents people motion traffic density in a specific area within a time period, using colors to display different densities of frequent traffic flow.
Intrusion	✓		✓					✓				✓			✓							Green	Detects when intrusion occurs in a pre-defined area ⁽⁴⁾ .
Motion detection	✓	✓	✓	✓	✓	✓	✓	✓	✓	✓	✓	✓	✓	✓	✓	✓	✓	✓	✓	✓	✓	Green	Cameras can be configured to detect motion in the image ⁽⁴⁾ .
Object Abandoned	✓		✓			✓		✓		✓		✓		✓								Green	Cameras can be configured to detect any object abandoned in a predefined area beyond a set period of time ⁽⁴⁾ .
Object Missing	✓		✓			✓		✓		✓		✓		✓								Green	Cameras can be configured to detect an object missing from a predefined area ⁽⁴⁾ .
People counting					✓	✓			✓	✓			✓									Green	Cameras can be configured to count people entering and leaving thru a predefined line ⁽⁴⁾ .
Scene change	✓	✓	✓	✓	✓	✓	✓	✓	✓	✓	✓	✓	✓	✓	✓		✓	✓		✓	✓	Green	Cameras can be configured to trigger an alarm when there is a change in the scene caused by movement of the camera ⁽⁴⁾ .
SD Card full/failure	✓	✓	✓	✓	✓	✓	✓	✓	✓	✓	✓	✓	✓	✓	✓		✓	✓		✓	✓	Green	The installed microSD card is full / not working ⁽⁴⁾ .
Tripwire	✓		✓					✓				✓			✓							Green	Detects people, vehicles and objects crossing a predefined line in the image ⁽⁴⁾ .
Video tampering	✓	✓	✓	✓	✓	✓	✓	✓	✓	✓	✓	✓	✓	✓	✓	✓	✓	✓	✓	✓	✓	Green	Cameras can detect when the lens is covered ⁽⁴⁾ .
Intrusion Detection ⁽¹⁾						✓			✓				✓									Blue	Improved detection of intrusion in a predefined area in the image ⁽⁴⁾ .
Loitering Detection ⁽¹⁾						✓			✓				✓									Blue	Improved detection of people loitering with in an area for a predefined period of time ⁽⁴⁾ .
Trigger Line Detection ⁽¹⁾						✓			✓				✓									Blue	Improved detection of people, vehicles and objects crossing a predefined line in the image ⁽⁴⁾ .
Xtralis IntrusionTrace™ ⁽²⁾				✓	✓			✓								✓	✓		✓	✓		Red	Provides high performance intrusion detection using video analytics specifically designed for 24/365 low false alarms operation.
Xtralis LoiterTrace™ ⁽²⁾				✓	✓			✓									✓		✓	✓		Red	Provides high performance Loiter detection using video analytics specifically designed for 24/365 low false alarms operation.
Xtralis VehicleTrace™ ⁽³⁾								✓														Red	Detects and captures the image of license/number plate of a vehicle, convert the image into characters, then generate an event for MAXPRO NVR/VMS

(1) Open VA framework
 (2) Additional license application required, Firmware must be 30 March 2017 or later
 (3) MAXPRO NVR 4.9 minimum (consult us for availability in regions)

✓ Available on the Camera and MAXPRO NVRs
 ✓ Available on the Camera only

(4) A set of alarms can be triggered as configured.

GDPR (EU GENERAL DATA PROTECTION REGULATION)

The EU General Data Protection Regulation (GDPR) comes into force on May 25, 2018. The GDPR is designed to harmonize data privacy laws across Europe and to protect and empower individuals in the EU with respect to the processing of personal data relating to them. There is no question that the GDPR is the most important change in data privacy regulation in the EU in more than 20 years – for Honeywell and our customers. Like all other organizations doing business in the EU, we are working hard to prepare for the GDPR. The security and privacy of our customers' information is, and always will be, among our highest priorities. We are committed to complying with the GDPR and to helping our customers do the same.

Below are some of the ways in which Honeywell is working to comply with the GDPR:

• How will Honeywell comply with the GDPR?

As a global organization, Honeywell works to comply with data privacy laws in the countries in which we operate. Honeywell has an in-house data privacy team that monitors developments in data privacy regulation globally, including the GDPR. In recognition of the significant change that the GDPR represents, we have established a global cross-functional team and corresponding program to help us prepare. This program, which encompasses Honeywell's products and services, as well as our internal processes and procedures, is led by Honeywell leaders from a variety of key functions impacted by this regulation. At the same time, we are developing training for employees across our Company to ensure that they are aware of the key changes that the GDPR will bring and how to comply with them.

• How does Honeywell secure customer data?

Honeywell has always been committed to securing our customers' data. Accordingly, the requirement in Article 32 GDPR to take steps to ensure the security of the data we process is not new, and we are continuously evolving to keep pace with changing technologies and cyber security threats. Honeywell keeps our customers' data secure by enforcing policies and procedures outlined in regulatory requirements and by implementing industry best practices and critical control frameworks, including NIST SP 800-171 and ISO 27001. Obligations include topics such as access management, asset and change management, data protection, vulnerability management, incident response, responsible disclosure, and business continuity and physical security. Applications and products are developed and implemented in accordance with these control obligations and Honeywell's secure software development lifecycle. Honeywell employs a defense-in-depth strategy, including several levels and types of protection and monitoring technologies to protect the confidentiality and integrity of customer data. Honeywell IT and security controls undergo regular testing from internal and external assessments and audits. Honeywell maintains the Cyber Essentials Scheme certification.

• How will Honeywell comply with the security notification requirements of the GDPR?

At Honeywell, we pride ourselves on our security standards and excellent track record in data security. At the same time, in today's increasingly complex digital world, we recognize that robust incident-response capabilities are of equal importance to our customers. We have reinforced our existing incident response procedures to align with the requirements of Article 33 of the GDPR, including timely security notifications and assistance.

• How does Honeywell comply with the GDPR's restrictions on international data transfers?

As a global Company, we operate in 1,250 sites in 70 countries. Our global scope is a key competitive advantage. Therefore, our data management practices reflect our strategic goals. Many of our customers ask what steps we take to transfer personal data outside the EU. Aligned with many other organizations, we rely on the EU Model Clauses for this purpose (available at: https://ec.europa.eu/info/strategy/justice-and-fundamental-rights/data-protection/data-transfers-outside-eu/model-contracts-transfer-personal-data-third-countries_en). The EU Model Clauses are a legal instrument designed by the European Commission to ensure that personal data is treated in compliance with European data privacy laws – even after it has left the EU. Honeywell enters into the EU Model Clauses with its group companies, suppliers, and other third parties outside the EU to ensure the legality of its international data transfers. Some of our customers are concerned that the GDPR prohibits transfers of personal data outside the EU. This is incorrect. In fact, the preamble to the GDPR expressly recognizes that "Flows of personal data to and from countries outside the Union are necessary for the expansion of international trade and international cooperation." Chapter V GDPR confirms the continued validity of the EU Model Clauses, while introducing several new and innovative mechanisms that organizations can use to facilitate international data transfers. We intend to continue using the EU Model Clauses as its preferred means of transferring personal data outside the EU.

Cybersecurity

Modern IP technology can enable effective and manageable video surveillance to protect people, their information, their properties, and help ensure continuous operation. It can also create the potential for enhanced safety and security benefits for our society to prevent costly security incidents. However, the cyber security of IP technology has been challenged by the pace of technology transition and development, creating potential safety and economic risks.

Cyber-attacks at the local and global scale are on the rise, and according to a 2016 report published by Grant Thornton, the total estimated global financial loss associated with cyber security attacks is estimated to be U.S. \$315 billion each year. One example of a major cyber-attack occurred in the U.S. in October of 2016. Internet access was denied to many major websites, including Twitter, The Guardian, and CNN. This attack, which was the largest of its kind at that time, was conducted by a botnet virus called "Mirai" from infected Internet Protocol (IP) video devices on the internet.

Honeywell takes cyber security seriously and created a white paper to provide an overview of Honeywell's approach to cyber security, including its latest IP video surveillance products and systems designed to intelligently prevent dangerous attacks.

Please contact your Honeywell Security Sales representative to get the **Honeywell Cybersecurity White Paper**.





Download our Free Mobile Apps



MAXPRO® NVR



Cameras & NVRs products portfolio



Honeywell Security Security Office

Emaar Business Park, Sheikh Zayed
Road Building No. 2, 2nd Floor, Office No.
201 Post Office Box 232362 Dubai
United Arab Emirates
Tel: +971 44505 800
Fax: +971-4-450-5900

Customer service:

honeywellsecurity.orders@honeywell.com

Technical support:

honeywellsecurity.postsales@honeywell.com

Product and Sales enquiry:

honeywellsecurity.marketing@honeywell.com

HSV-VideoShowcase-07-EN(0518)CAT-Z
May 2018
© 2018 Honeywell International Inc.

Honeywell